

## 4. Technical Data/Specification:

### Front of easySPLIT

- RJ45 jack for power supply

### Back of easySPLIT

- VHF antenna in: **S0239**, female, 50 Ohm
- RX/TX radio device: **S0239**, female, 50 Ohm
- FM Radio: **Chinch**, female
- easyAIS (or other AIS device): **BNC**, female, 50 Ohm

### Electrical performance:

- Power supply: 9V up to 28VDC (printing on the front panel is not correct!)  
Power consumption:
- Standby – this means the “green LED” is illuminated: max: 25mA
- Use of RX/TX unit (VHF-Radio) over the easySPLIT: max: 130mA  
(as long as there are messages sent over the VHF-Radio)
- Antenna Port impedance: 50 Ohm

### Dimensions (overall):

- Length: 140mm, Width: 140mm, Height: 36mm
- Weight: app. 400gr.

### Coupling factors (Standby, VHF-Transmitter OFF)

- Coupling factor Antenna – AIS-Port: >-3.8dB (@ 145 ... 165 MHz)
- Coupling factor Antenna – VHF Transm. (Reception Mode): >-3.8dB (@ 145 ... 165 MHz)
- Coupling Factor Antenna – FM-Radio: >-3dB (@ 87 ... 108 MHz)
- Decoupling VHF-Transmitter (Reception Mode) – AIS-Port: > 20dB (@ 145 ... 165 MHz)

### Coupling factors (Active, VHF-Transmitter ON):

- Coupling Factor VHF Radio (Transmit Mode) – Antenna: < 0.8dB
- AIS-Port: switched off (Decoupling to Transmitter > 30dB)
- FM-Radio-Port: switched off (Decoupling to Transmitter > 40dB)

### Transmitter Power Handling:

- Maximum Transmit Power: 30WMinimum Transmit
- Power (Limit to activate Splitter): > 400mWActivation delay after RF-
- ramp-up (VHF-Radio set to transmit): < 10msec

### Miscellaneous

EasySPLIT is not splash-proof. But the electronic boards do have a conformal coating and therefore they are insensitive against humidity and migration

## Safety Information:

### License Agreement

BY USING THE easySPLIT YOU AGREE TO BE BOUND BY THE TERMS AND CONDITIONS OF THE FOLLOWING LICENSE AGREEMENT.  
PLEASE READ THIS AGREEMENT CAREFULLY.

Weatherdock grants you a limited license to use this device in the normal operation of the product. Title, ownership rights, and intellectual property rights in and to the remain in Weatherdock AG.

### Limited Warranty

This Weatherdock product is warranted to be free from defects in materials or workmanship for 24-month from the date of purchase. Within this period, Weatherdock will at its sole option repair or replace any components that fail in normal use. Such repairs or replacement will be made at no charge to the customer for parts or labour, provided that the customer shall be responsible for any transportation cost. This warranty does not cover failures due to abuse, misuse, accident or unauthorized alteration or repairs.

THE WARRANTIES AND REMEDIES CONTAINED HEREIN ARE EXCLUSIVE AND IN LIEU OF ALL OTHER WARRANTIES EXPRESS OR IMPLIED OR STATUTORY, INCLUDING ANY LIABILITY ARISING UNDER ANY WARRANTY OF MERCHANTABILITY OR FITNESS FOR A PARTICULAR PURPOSE, STATUTORY OR OTHERWISE.

IN NO EVENT SHALL WEATHERDOCK BE LIABLE FOR ANY INCIDENTAL, SPECIAL, INDIRECT OR CONSEQUENTIAL DAMAGES, WHETHER RESULTING FROM THE USE, MISUSE, OR INABILITY TO USE THIS PRODUCT OR FROM DEFECTS IN THE PRODUCT.

Weatherdock retains the exclusive right to repair or replace the unit or software or offer a full refund of the purchase price at its sole discretion. SUCH REMEDY SHALL BE YOUR SOLE AND EXCLUSIVE REMEDY FOR ANY BREACH OF WARRANTY.

### Warnings and Precautions

#### WARNING:

If you choose to use the EasySPLIT in a boat, it is the sole responsibility of the owner/operator of the EasySPLIT to secure the easySPLIT so that it will not cause damage or personal injury in the event of an accident. If you choose to use the EasySPLIT in boat, it is the sole responsibility of the operator of the boat to operate the boat in a safe manner, maintain full surveillance of all boating conditions at all times, and never become distracted by the EasySPLIT to the exclusion of safe operating practices.

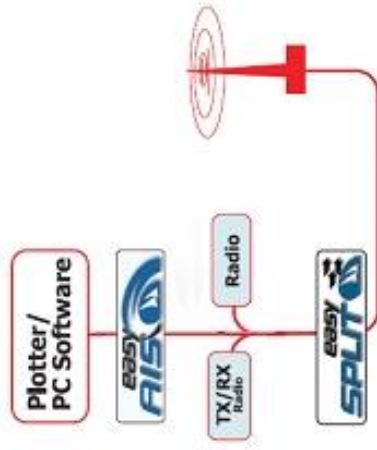
## 1. Contact / Addresses:

Service/Technical Advice:  
 Your local saler or contact the manufacturer directly over the homepage:  
[www.easyAIS.de](http://www.easyAIS.de)  
[info@easyAIS.de](mailto:info@easyAIS.de)

Weatherdock AG  
 Am Weichselgarten 7  
 D-91058 Erlangen  
 GERMANY  
[info@weatherdock.de](mailto:info@weatherdock.de)

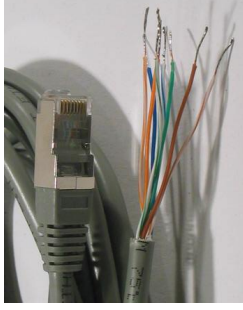
## 2. Mounting of the easySPLIT

The easySPLIT "divides" the signal for the use of further devices – all connected to the same antenna. (maybe already existing)



Picture: General overview how the easySPLIT to be connected

## 3. Connecting of the easySPLIT



Picture: wire towards power lines

List Cable connection

EasySPLIT, Cable colour	Function
Brown	Power supply, positive +9 ... +28V
Blue	Power ground, negative

...the other cables are not used.

After the easySplit is connected to the lines and the main switch is set to "ON", the green LED is illuminated.

The red LED is "ON" as long as the VHF-Radio is transmitting.

The EasySPLIT provides an internal fuse on the electronic board. (500mA, slow blow)

In case of a fault, the fuse can be exchanged by opening the housing.

**ATTENTION:**

Do not replace with a fuse of a different rating than the mentioned, with a fuse of unknown rating or replacing the fuse with simple wire.

**NOTE:**

Please do connect the easySPLIT at the same power outlet/fuse as your VHF Radio unit. This is a precaution not to use an "OFF" mode the easySPLIT with high power VHF!!!